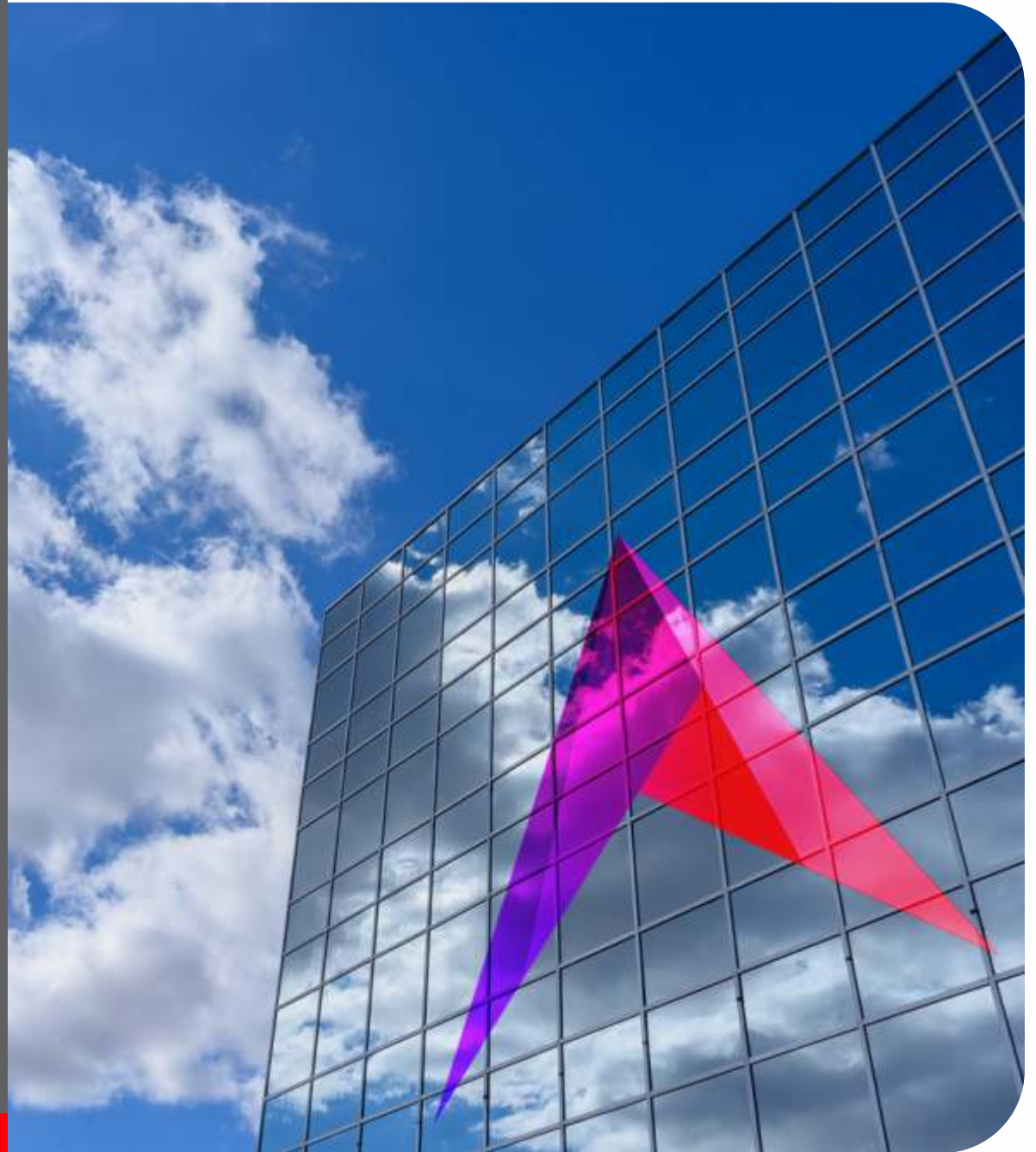


LANDMARK

THINK • CREATE • LEAD





WE ARE THE LANDMARKS
OF TOMORROW

TABLE OF CONTENTS

1

COMPANY
OVERVIEW

3

PORTFOLIO

2

LANDMARK
DIFFERENCE

4

SHAPING
THE SKYLINE



1

COMPANY OVERVIEW





Landmark Group formed in 1992 as an IT company has today diversified and successfully established in the fields of **Real Estate and IT Services.**



Founder & Promoter Landmark Group is a respected professional in the Real Estate industry. A dynamic engineer in communications and computer networking technologies, Sandeep is spearheading the conglomerate of Landmark Group of companies, namely - IT and Real Estate.

He brings to the table a new approach of transformation in the Real Estate that engages with the customer at every level. Earning their trust, delivering on promises made and backing all this up with impeccable services. He is leading a team of institutional builders, moving towards delivering landmarks.

SANDEEP CHHILLAR

Chairman & Managing Director



OUR BUSINESSES



REAL ESTATE

14 Projects Delivered



IT

Strategic alliances with world leaders like IBM, CA, VERITAS, Cisco, Microsoft, Oracle, HP, Citrix, APC and Intel



CO-WORKING SPACE





IT BUSINESS



LANDMARK INFONET PVT. LTD.

Landmark is today a name to Reckon with in Government and Corporate sector.

Completing 26th year of its existence in the Industry.

Established strongest relationship in Indian defense sector

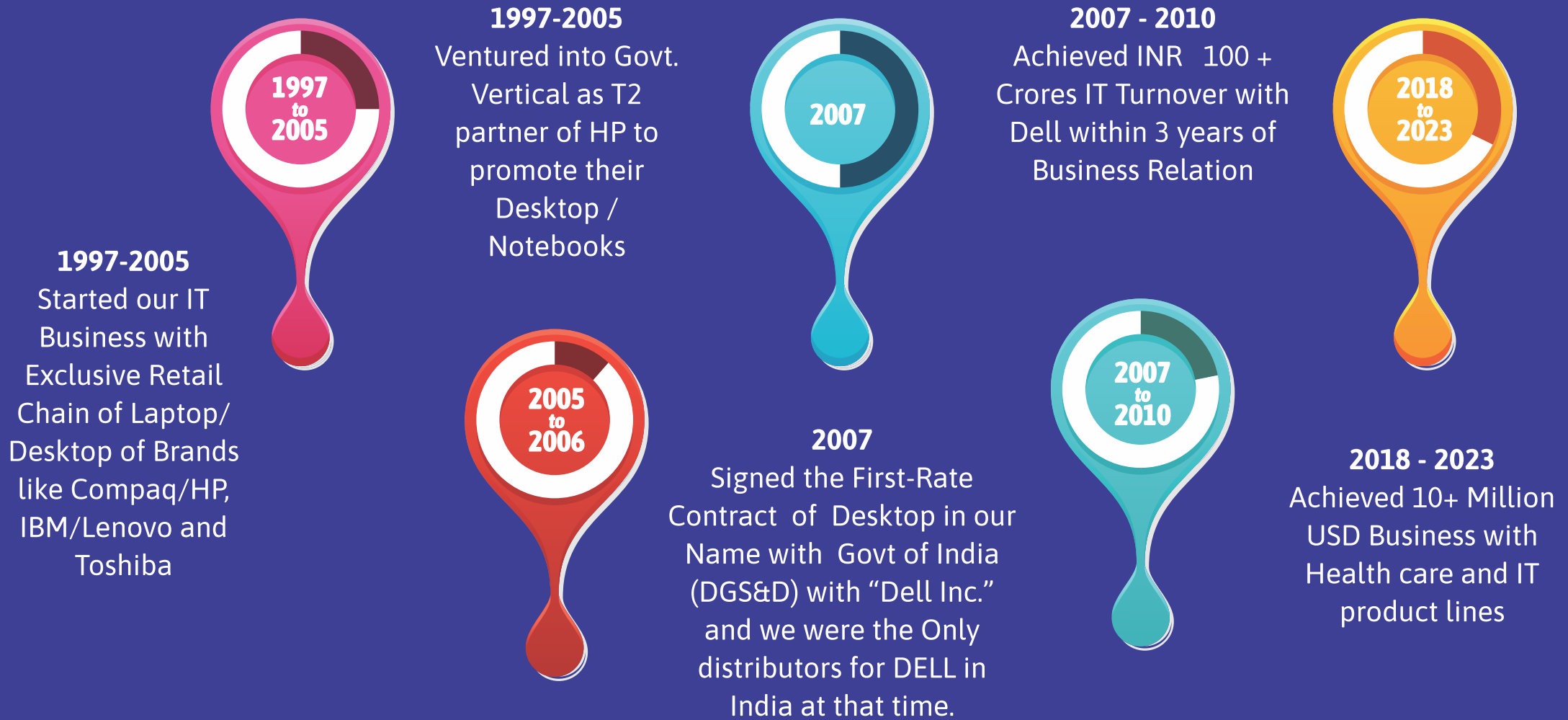
We have string of strategic alliances with the globally recognized brands like Lexmark, ACER, RMS, Printronics and Kodak Alaris

Having specialized skills to do GEM business

PAN India coverage through partners



COMPANY MILESTONES





OUR ASSOCIATIONS

Our Collaboration with Globally recognized brands of their segment

Kodak alaris

We are National Distributors of Kodak Alaris Brand of Scanners.

Kodak Alaris

PRINTRONIX®
GLOBAL PRINTING...ENABLED.

We are National Distributors of Printronix Brand of Line Matrix Printer

Printronix

acer

We are distributor of ACER Lifestyle products

ACER



Lexmark™

We are National Distributors of MFP Printers, MFD Printers, Consumables

Lexmark



TOSHIBA

Lenovo

and lot more...



OUR CLIENTS

Ministry Of The Defense. (Army , Airforce)

State Bank Of India

Airport Authority Of India

Ministry Of Coal

Department Of Higher Education Organization

Employees Provident Fund Organization (EPFO)

New Delhi Municipal Council, NDMC

Army, Air Force

Kendriya Vidyalaya Sangathan (KVS)

Department Of Telecommunications (DOT)

Punjab National Bank

Delhi Metro Rail Corporation Ltd.

Lok Sabha Secretariat

Hindustan Petroleum Corporation Limited

Punjab National Bank

Indian Oil Corporation Limited

NTPC Ltd.

Power Grid

CRPF

BSF

Department Of Fertilizers

P G Institute Of Medical Education And Research Chandigarh

All India Institute Of Medical Sciences (AIIMS)

Defence Research And Development Organisation (DRDO)

Ministry Of Railways

Indian Ordnance Factories

Department Of Posts

Employees State Insurance Corporation (ESIC)



2

LANDMARK DIFFERENCE





LANDMARK - *Then, Now & Beyond*

THEN

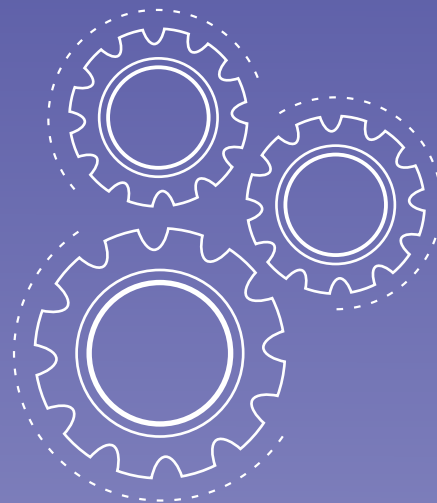
Diversified business into IT Services, Land banking and real estate development business

IT services to several government departments, institutions and private companies

Real Estate - Townships, low rise row housing, Villa complexes, group housing, IT Park, mixed-use retail

NOW

Relaunching the real estate development vertical with a new professional team, architects and other consultants

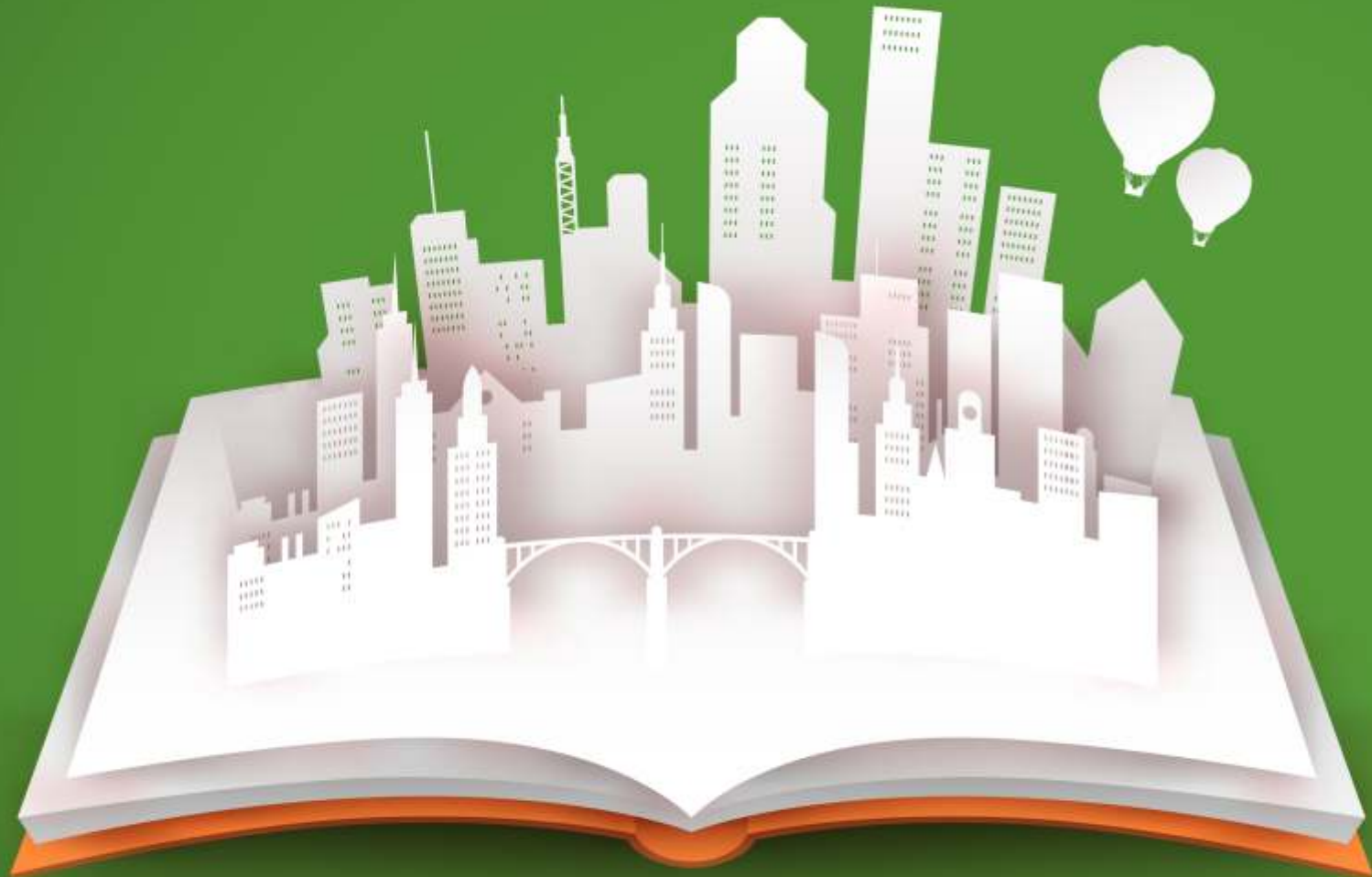


BEYOND

Aspiration to become a highly respected player in the real estate development.

To make Landmark a highly respected brand that stands for surpassing of market's expectations and honoring commitments, creating customer delight





3

PORTFOLIO

OUR PROJECTS





DELIVERED PROJECTS



LANDMARK CYBERPARK

Located in Sector 67, Gurugram

G + 8 storied office complex with large floor plates

Grade 'A' Office Spaces with Super Area of 400,000 sq. ft.

Floor plate sizes of approx. 50,000 sq. ft.

Access to incubation spaces within the same complex

Surrounding by residential area for convenient walk to work

Shopping Mall, Cafe's, Fine Dining Restaurants in close vicinity.

ACTUAL PHOTO OF LANDMARK CYBERPARK



JOYSTREET

Located in Sector 66, Gurugram

High Street Retail Development spread over 4,85,750 Sq. Ft with:

Complete Shopping Experience

Large Food Court

6-screen Multiplex

Serviced Apartments



ACTUAL PHOTO OF AIPL JOYSTREET



LANDMARK HOUSE

Located in Sector 44, Gurugram

Super Area - 100,000 sq. ft. approx

Grade 'A' Office Spaces

Some of our clients:

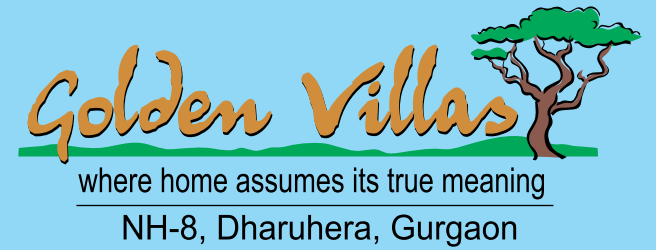


LANDMARK

THINK • CREATE • LEAD



ACTUAL PHOTO OF LANDMARK HOUSE



LANDMARK GOLDEN VILLAS

Located in Dharuhera

85 Acres township

Luxurious villas on plots sizes ranging from 500 to 1500 Sq. yards

Well planned township with all modern facilities and amenities

ACTUAL PHOTO OF GOLDEN VILLAS





LANDMARK PLATINUM VILLAS

Located in Dharuhera

Luxurious villas in plots sizes from 300 to 500 Sq. yards

Well planned 11 acres township with a modern clubhouse



LANDMARK PLATINUM HEIGHTS

Located near Bawal Industrial Area

Premium apartments



LANDMARK AVENUE

Located in C Block, Sushant Lok-1, Gurugram

Limited edition 60 Independent Floors



LANDMARK RESIDENCY

Located in Sector 103, Dwarka - Gurgaon Expressway



LANDMARK RESIDENCY

Located in Sector 103, Dwarka - Gurgaon Expressway



LANDMARK CITY

Sector 9, Shahabad(M), Distt. Kurukshetra

Spread over 12.00 & 13.9875 acres

Affordable Residential Plotted Colony under Deen Dayal Jan Awas Yojna

480 nos. of plots between 60 -180 sq.yds.

CC applied

LANDMARK CITY
SHAHABAD

LANDMARK KUNJEANS HEIGHT & IMPERIAL HEIGHTS

Sector 88, Faridabad

Spread over 3 acres

Residential Group Housing

134 units of 3+1 BHK Premium Apartments

Delivered


KUNJEANS
HEIGHT

LANDMARK
Imperial Heights
Faridabad



CO-WORKING BUSINESS



VENTURE X

Venture X strives to provide high quality, flexible spaces to business professionals allowing our members to grow their companies and exceed their business goals

Located in Sector 44 / Sector 50 / Sector 67, Gurugram

ACTUAL PHOTO



ACTUAL PHOTO





PLUS OFFICES

Plus Offices offer Co-working spaces conveniently located near the top corporate areas in Gurgaon.

30,000 Sq. Ft. Plus Offices are located in Sector 44, Gurugram

50,000 Sq. Ft. Plus Offices are located in Sector 67, Gurugram

ACTUAL PHOTO OF ENTRANCE LOBBY AREA



ACTUAL PHOTO OF TYPICAL WORKSTATION AREA





ONGOING PROJECTS

LANDMARK AVANA

Located in Sector 95, Gurugram

Low-rise Community-Centric Township

Expansive Greens

World - Class Clubhouse

Retail



LANDMARK
AVANA
SECTOR 95, GURUGRAM

LOW DENSITY

3BHK + 2T + Home Office

3BHK + 3T + Home Office

STRATEGICALLY LOCATED

*With access from 24 Mtr. Sec. Road,
Pataudi Road & Revenue Road*

WORLD CLASS CLUBHOUSE

with plethora of amenities

LANDSCAPED

Gardens & Water bodies



Not just a piece of land.
But the Finest Plots in a
Gated Community.

Limited Edition Residential Plots

155 SQ. YDS.

(155 Sq. Yds - 129.6 Sq. Mtr*)



Artistic Impression





Artistic Impression

LANDMARK SPRINGWALK

G+2 Retail

Central Green Atrium

Vibrant Mix Of Shopping, Cafés,
Restaurants & Daily Conveniences

Ample Parking



SECTOR 81, GURUGRAM

Artistic Impression Of Exterior Facade



PREMIUM HIGHT STREET RETAIL

Prime Location: Strategically positioned in sector 88, Gurugram.

Diverse Offerings: A dynamic mix of High Street Retail, Dining, Cafes, Entertainment, and Office spaces in a vibrant and dynamic atmosphere.

Community Integration: The development is intricately woven into the cultural tapestry of the neighborhood, aiming to contribute to the growth of the neighbourhood



Artistic Impression



Artistic Impression



Artistic Impression



Artistic Impression



LANDMARK ONE

Strategic Location: Landmark One is strategically located in the heart of sector 67, Golf Course Extension, Gurugram.

Thoughtful Planning: The corporate hub is the result of meticulous planning, ensuring that it caters to the contemporary needs of businesses with carefully considered facilities and amenities.

Grade A Offices: Landmark One is designed to meet high standards, providing a top-tier corporate environment for businesses to thrive.

LANDMARK
ONE



Artistic Impression





UPCOMING PROJECTS

COMMERCIAL

LANDMARK ONE

Sector 67, Gurugram

2.2 Million sq. ft. of ultra premium Grade 'A' offices

RESIDENTIAL

Sector 103, Gurugram

Group housing spread over 11 acres

MIXED - USE DEVELOPMENT

Sector 88, Gurugram

Mixed-use Retail Development spread over approx. 2.5 acres





UPCOMING PROJECTS

RESIDENTIAL

7 Acres DDJY Tohana, District Fatehabad Garden

City, 10 Acres DDJAY Rohtak



LANDMARK

THINK • CREATE • LEAD

SALES OFFICE

7th Floor, Landmark Cyber Park
Sector 67, Gurugram
Haryana - 122 018

LANDMARK GROUP

Corporate Office

Landmark House- 65, Sector 44
Gurugram, Haryana - 122 003

Tel: 0124 4850000

DISCLAIMER

Information, images and visuals, drawings, plans or sketches shown in this advertisement and other promotional documents are only an architect's impression. The furnishings, fixture and furniture etc., wherever appearing do not form a part of the standard offering. The company endeavors to keep the information up to date and correct but makes no representation of or warranty is made or intended as to the accuracy or completeness of information and no commitments are being given under this brochure/advertisement/ promotional document as to its suitability or adequacy for any purpose or otherwise howsoever. You are required to verify all the details, including area, amenities, services, terms of sales and payments and other relevant terms independently with the company prior to concluding any decision for buying any unit(s) in the project. All the dimension in the drawings may vary/differ as compared to original at site. Actual product/development and any other aspect may differ from what is portrayed herein. All layouts, plans, specifications, design, measurements and locations are actual, however the same are not to scale. The company disclaims any and all liability on account of any reliance placed on this brochure/advertisement/promotional document. The company may develop/construct additional FSI/FAR, which may be available to the company at a later date, over and above the Project FSI/FAR and/or raise additional stories and/or to raise additional and further constructions and structures and/or construct additional area over and above the Project including any open areas and/or terraces and roofs at any time or from time to time whether during the course of construction and completion of the Project and/or any time thereafter.